



აზნოხუცენ  
**MZIRALI**

Batumi, Georgia

61 Andria Pirveltsodebuli Avenue

## LOCATION

The hotel-type residential house “MZIRALI” is one of the outstanding complexes in Gonio settlement. It is located 15 km from the center of Batumi, and 5 km from the Sarpi Customs Checkpoint.

Near MZIRALI is the tourist attraction Gonio Castle.

The Gonio fortress has been a museum-reserve since 2010. There are exhibits dated back from the early years of the nineteenth century to the 80's.







# LOCATION

The building complex is located near the exceptionally clean seashore





## ABOUT PROJECT

The hotel-type residential house “MZIRALI” consists of two blocks of buildings (A & B).

Block A, which faces directly the highway, is a 9 storey building with a semi-open restaurant on the top floor. Each floor has 4 apartments.

Block B, is an 11 storey building with a closed parking area and a fitness center. There are 5 apartments on each floor.

Both blocks of the complex have a panoramic elevator.











# A BLOCK





# B BLOCK



## Apartment B - 01

Living area - 32.13 m<sup>2</sup>

Balcony - 7.70 m<sup>2</sup>

TOTAL AREA - 39.83 m<sup>2</sup>



ՀԱՅԿԵՆ  
MZIRALI

## Apartment B - 02

Living area - 42.05 m<sup>2</sup>

Balcony - 5.65 m<sup>2</sup>

TOTAL AREA - 47.70 m<sup>2</sup>





## **Apartment B - 03**

Living area - 38.10 m<sup>2</sup>

Balcony - 2.68 m<sup>2</sup>

TOTAL AREA - 40.78 m<sup>2</sup>



## **Apartment B - 04**

Living area - 38.02 m<sup>2</sup>

Balcony - 7.23 m<sup>2</sup>

TOTAL AREA - 45.25 m<sup>2</sup>



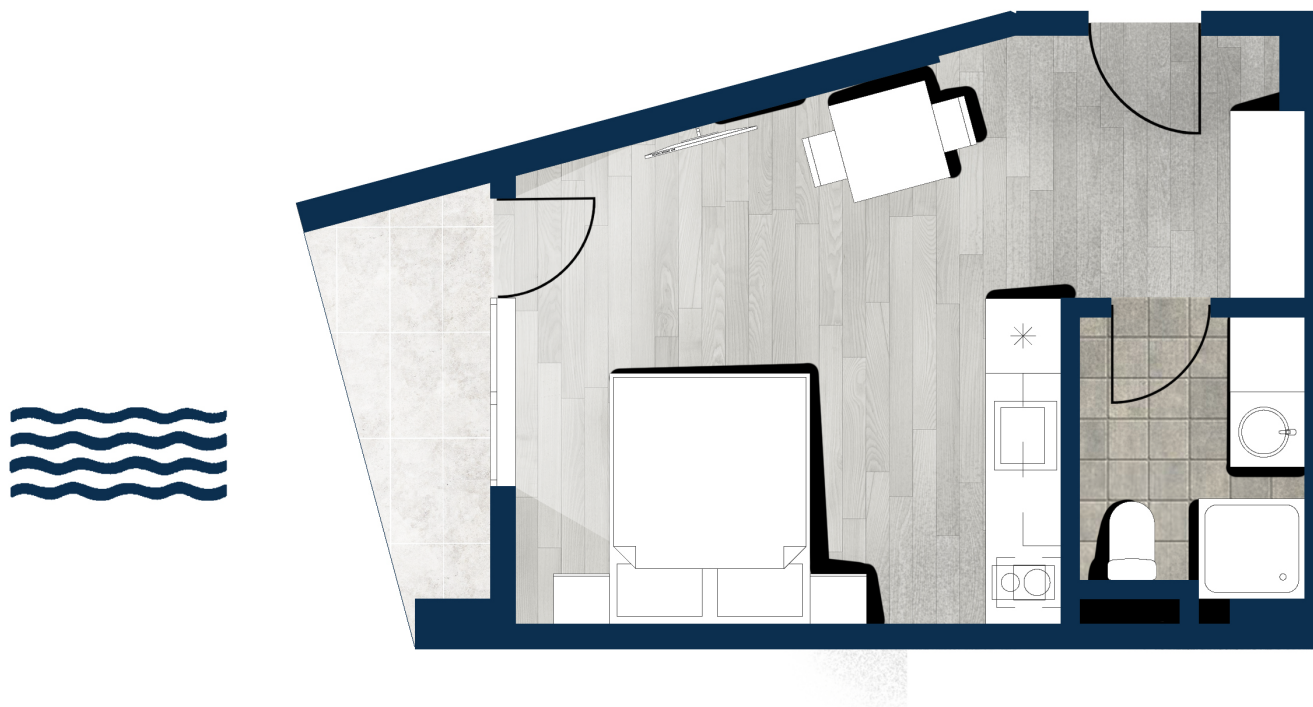
**ՀԱՅԿԵՆ  
MZIRALI**

## **Apartment B - 05**

Living area - 27.06 m<sup>2</sup>

Balcony - 3.55 m<sup>2</sup>

TOTAL AREA - 30.61 m<sup>2</sup>







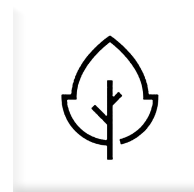
Here you will find:



Outdoor & Underground  
parking zone



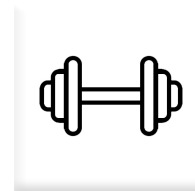
Restaurant



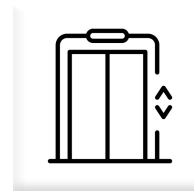
Green yard



Bike parking



Fitness center



Panoramic  
elevators



ԶՏՈՒՋԵՆ  
MZIRALI





მზირალი  
MZIRALI

[www.mzirali.ge](http://www.mzirali.ge)

